

A 540



PPM

A 540

MAIN TECHNICAL CHARACTERISTICS

- **TYPE** - 2-axle rough terrain crane
- **TONNAGE** - 50 tonnes at 3 meters over 360° (75%). 55 tonnes at 3 meters over 360° (85%).
- **BOOM** - 4-section full power boom.
- Maximum length : 32.50 meters.
- **HEIGHT** - 33.7 meters under hook.
- 53.6 meters under hook on lattice extension (20 meters).
- **CARRIER** - 4x4x4 - 4-wheel coordinated steer and crab steer.
- **ENGINE** - CUMMINS 180 HP.
- **MOBILITY** - Maximum speed: 30 km/h. Gradeability (computed) : 110%.

WEIGHT

| Axle | 1 | 2 | Total weight (t) |
|--------|------|----|------------------|
| Weight | 18.3 | 20 | 38.3 |

CARRIER AND POWERTRAIN

- **CONSTRUCTION** - PPM design. Machine welded carrier frame from high tensile steel. Lifting and towing points located over front and rear of carrier.
- **OUTRIGGERS** - Outriggers control from the cab.
- Horizontal beams and vertical jacks extended independently.
- **ENGINE** - CUMMINS 6 CT 8.3 , 6-cylinder in line diesel. Water cooled. 180 HP (132 Kw) at 2,200 rpm.
Maximum torque : 732 Nm at 1,500 rpm. 8.3 litre capacity. Fuel tank capacity : 250 litres.
- **TRANSMISSION** - Torque convertor and CLARK powershift gearbox with 6 forward and 6 reverse gears.
- 4-wheel drive on the low range - 2-wheel drive on the upper range.
- Torque convertor cooled by a system integrated into the engine radiator.
- **AXLES** - 2 drive/steer axles with planetary hub reductions.
- Front axle rigidly mounted on the chassis.
- Pivot-mounted rear axle. Oscillation lock for lifting on tyres
- Differential lock on rear axle.
- **STEERING** - Hydrostatic steering controlled from the steering wheel and acting on each axle.
- 4-wheel coordinated steer and crab steer.
- **BRAKING** - Main brake : hydropneumatically operated with twin circuit applied to each wheel.
- Parking brake : pneumatically operated, spring applied to each wheel.
- **TYRES** - Four 23.5 R 25 tyres (tubeless).

UPPERSTRUCTURE

- **STRUCTURE**
 - PPM design. Machine welded frame made from high tensile steel. Ball bearing slewing ring with internal gear teeth.
- **TELESCOPING**
 - 4-section full power boom.
 - Boom section made of high tensile folded steel plate - Octagonal shape.
 - 2 double-acting cylinders extend the second and third sections. Extension of the fourth section by chain. Synchronisation with third section.
- **WINCH**
 - Piston motor drives an epicycloidal reducer. Automatic multi-disc brake and counter-balancing valve. Maximum linepull : 4.5 tonnes (last layer). Maximum single linespeed : 120 m/mn. Cable diameter : 18 mm. Length : 185 m.
- **DERRICKING**
 - 1 double acting ram. Speed of descent controlled by safety valve.
 - Angles : - 2° to 80°. Negative derricking angle makes access to boomhead easier.
- **SLEWING**
 - PPM designed slewing mechanism.
 - Free rotation of the upperstructure with dynamic footbraking.
 - Precise and progressive start of movement.
 - Hydraulic motor drives an epicycloidal reducer.
 - Speed : from 0 to 1.8 rpm.
- **CAB**
 - Panoramic cab with full visibility and equipped with all the controls for moving and operating the crane in comfort and safety. Opening roof and rear windows to provide good ventilation. Seat entirely adjustable with shock absorbing suspension. Hydraulic joysticks integrated to the cab. Adjustable armrests make access to the cab easier. Cataphoretic treated cab to prevent rusting.
- **SAFETY DEVICES**
 - Anti two-block device, lower stroke block limiter. Pressure limiters on all hydraulic functions.
 - LMI (Load moment indicator).

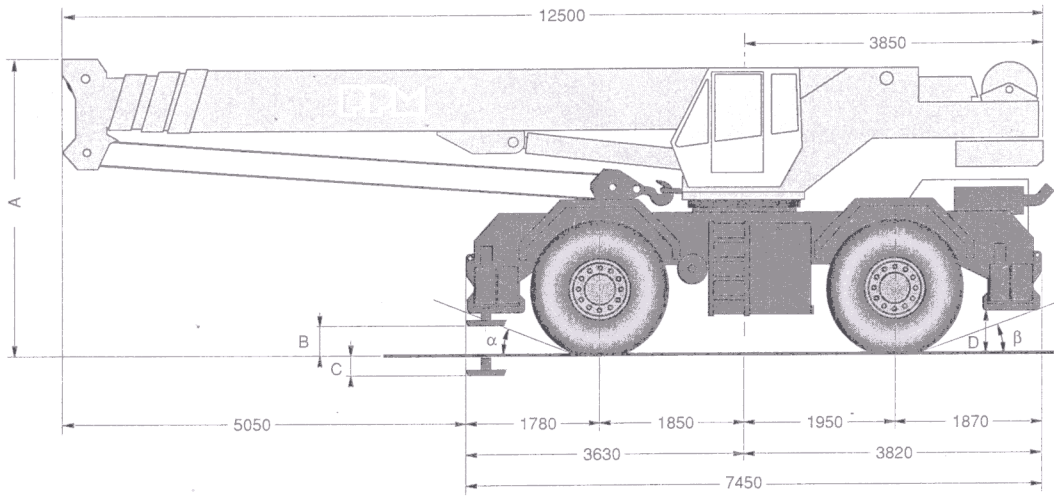
CIRCUITS

- **HYDRAULIC CIRCUITS**
 - 1 double gear pump and one double vane pump feed the 3 main circuits which are independent. High precision 6 parallel ways control valves. Filtering on return circuit. 630-litre tank. Oil cooler. Pressure pick-up points grouped in the upperstructure. 2 hydraulic joysticks with automatic return to neutral.
- **ELECTRIC CIRCUITS**
 - 24 V circuit. 132 Ah battery.
 - Cables have marked wires.
 - Full set of road lights.
- **PNEUMATIC CIRCUITS**
 - 160 CC compressor. Tyre inflater. Compressed air tank : 2 x 45 l.
 - Air scrubber to purify and dry the compressed air.

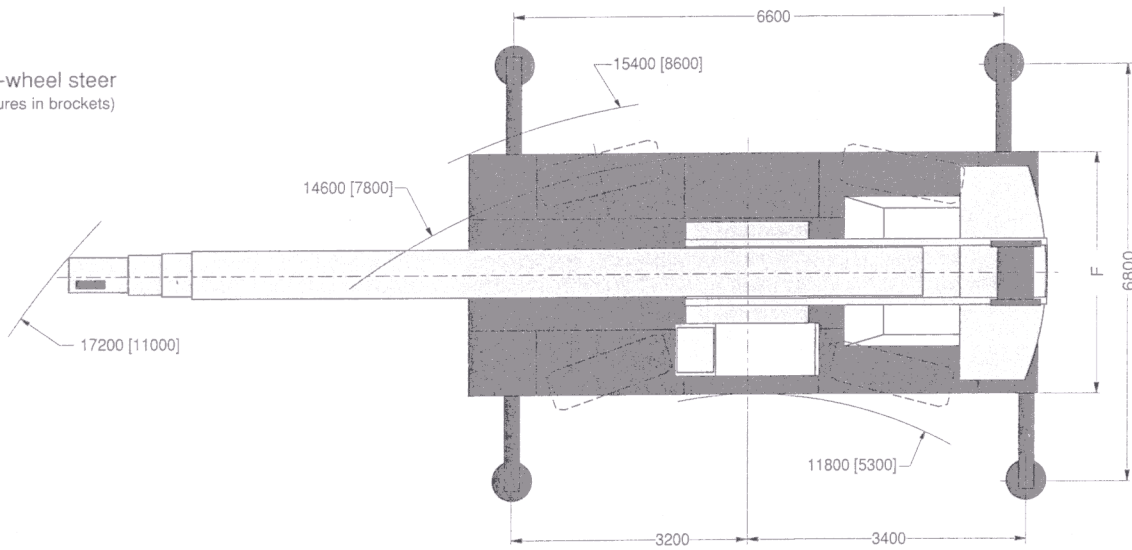
OPTIONS

- 8-meter, folded and stored along the boom, 14-meter, 20-meter lattice extensions. Offset angles : 0° or 20°.
- 10-meter lattice extension.
- Tyres : 26.5 R 25.
- 12.5-tonne hookblock.
- 5 tonnes/1 part of line hookblock
- Auxiliary winch.
- Cab heater.
- Other optional equipment on request.

DIMENSIONS



* 4-wheel steer
(figures in brackets)



| | A | B | C | D | F | α | β |
|-----------|------|-----|-----|-----|------|----------|---------|
| 23.5 R 25 | 3585 | 385 | 185 | 465 | 2900 | 20° | 18° |
| 26.5 R 25 | 3700 | 385 | 185 | 580 | 2970 | 22° | 20° |

NOTE: PPM reserve the right to modify the above specifications which are given as a guide only (figures in accordance with metric system).