

CRANES

NEW & SECOND-HAND



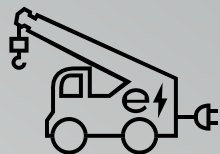
STOCKLIST

APRIL

2026



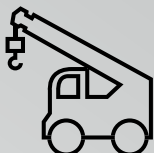
San Paolo (BS) - Italy
+39 030 9970501
info@ikran.eu
www.ikran.eu



ELECTRIC

PICK & CARRY CRANES
GRÙ SEMOVENTI ELETTRICHE

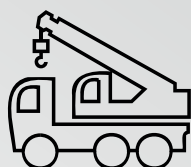
1-2



DIESEL

PICK & CARRY CRANES
GRÙ SEMOVENTI DIESEL

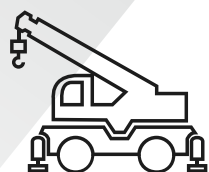
3



ALL TERRAIN

CRANES
AUTOGRÙ MULTISTRADA

4



ROUGH

TERRAIN CRANES
GRÙ FUORISTRADA

5-6



OTHER

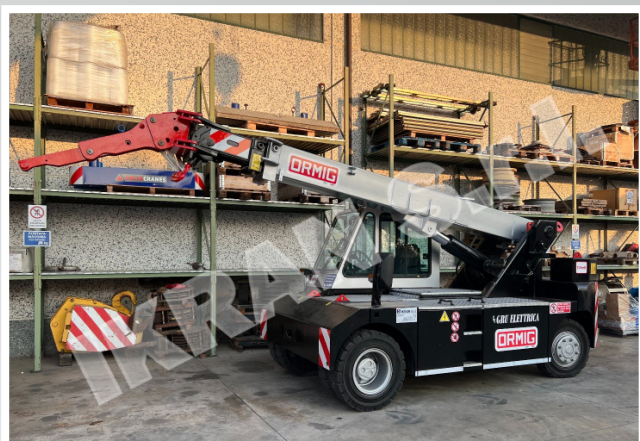
MACHINERY
ALTRI MACCHINARI

7



SARD E70

Lifting Capacity:	7 T
Year of Production:	2010
Boom Length:	6 m



ORIMG 10 TME

Lifting Capacity:	10 T
Year of Production:	2013
Boom Length:	9 m



ORIMG 10 TME

Lifting Capacity:	10 T
Year of Production:	2006
Boom Length:	9 m





ORMIG 16 TME

Lifting Capacity: 16 T
 Year of Production: 2009
 Boom Length: 11 m



ORMIG 16 TME

Lifting Capacity: 16 T
 Year of Production: 2009
 Boom Length: 11 m





FIorentINI F 338 I

Lifting Capacity:	32 T
Year of Production:	1989
Boom Length:	14,14 m



ALL TERRAIN

CRANES
AUTOGRÙ MULTISTRADA



GROVE RT550E

Lifting Capacity:	45 T
Year of Production:	2014
Boom Length:	39 m



GROVE RT540E

Lifting Capacity:	35 T
Year of Production:	2008
Boom Length:	31 m



LOCATELLI GRIL 830

Lifting Capacity:	30 T
Year of Production:	2005
Boom Length:	24,5 m



TEREX QUADSTAR 1075L

Lifting Capacity:	75 T
Year of Production:	2016
Boom Length:	41,7 m



TEREX RT45

Lifting Capacity:	45 T
Year of Production:	2018
Boom Length:	31,1 m



TEREX A350

Lifting Capacity:	30 T
Year of Production:	2002
Boom Length:	27,6 m

 **OTHER**
MACHINERY
ALTRI MACCHINARI



WE BUY
MOBILE CRANES
AND LIFTING EQUIPMENT

IMMEDIATE PAYMENTS



Owner and Sales Executive

ROSARIO COLOMBINI

Phone: +39 030 9970501

E-mail: info@ikran.eu



MOBILE CRANES & LIFTING SOLUTIONS



ORMIG was founded in 1949 by Guido Testore, who intuited in the first post-war period that Italy needed means to restart the production and the crane truck, already present in the United States but almost unknown in Europe, could have become a vehicle of great diffusion. A small group of specialized technicians managed to transform a work force that was purely dedicated to agriculture, into highly professional metalworkers, able to build a product that, exported all over the world, was a source of pride for Italian industry.



Locatelli Crane S.r.l. is the first totally Italian company that deals with the construction of hydraulic cranes, specialised in the production of off-road cranes measuring from 12.5 t up to 80 t and a 20t multi-road. The success of Locatelli Crane hydraulic cranes is based on their reliability, high level of performance and low operating costs, thanks to the high quality of the components and the long experience in manufacturing this type of machinery.



GALIZIA is an Italian company that designs, manufactures and markets electric self-propelled cranes, diesel and electric industrial telehandlers. The design phase is developed by a team of engineers and technicians, who make use of calculations and drawings by modern software. The production phase is entirely carried out within its own carpentry, mechanical processing and assembly departments by highly qualified staff.



DELTA CRANES is an important Italian group which designs and manufactures industrial electric pick & carry cranes. The high quality of the components, along with the longstanding experience of the staff, make DELTA CRANES machinery intuitive, functional and efficient, with particular care to the environment and the operators' safety. Moreover, the wide range of products makes them suitable for all lifting needs, from heavy loads to light handling.

FOR RENT

We offer a "long term rental" service, with or without operator.
Contact us for more information.



COMPONENTS and SYSTEM for INDUSTRIAL and COMMERCIAL VEHICLES

SI PARTS S.r.l. is a partner of the COBO GROUP, a leader in the design and sale of accessories for off-highway vehicles.

Recognized worldwide for the high-quality standard of its products in its catalogue, COBO entrusts SI PARTS for the B2B sales of the broad range of original items intended for spare parts dealers, mechanics, companies with a fleet of company vehicles.

