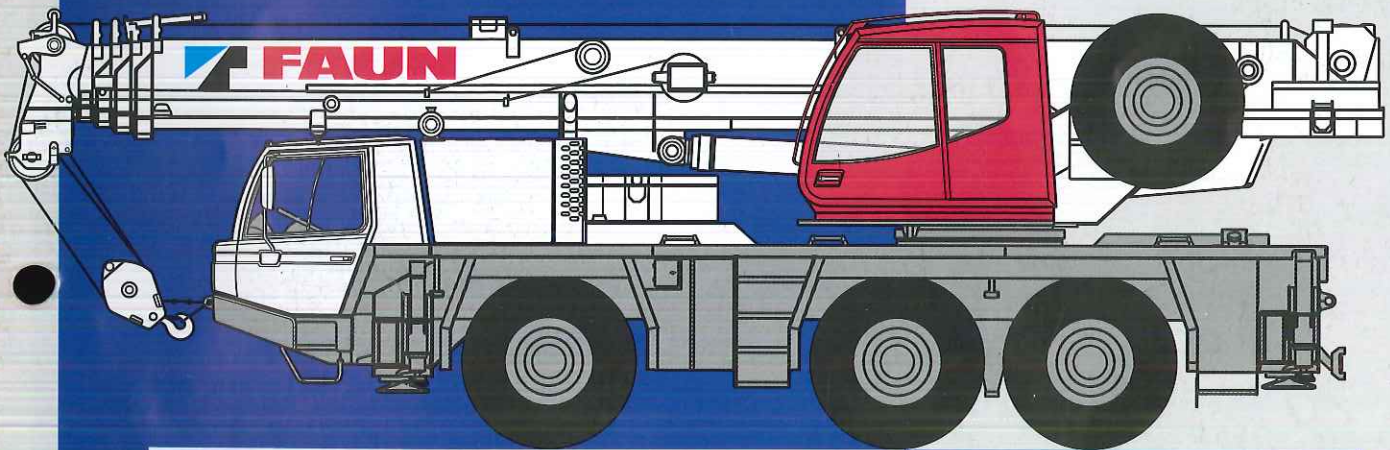


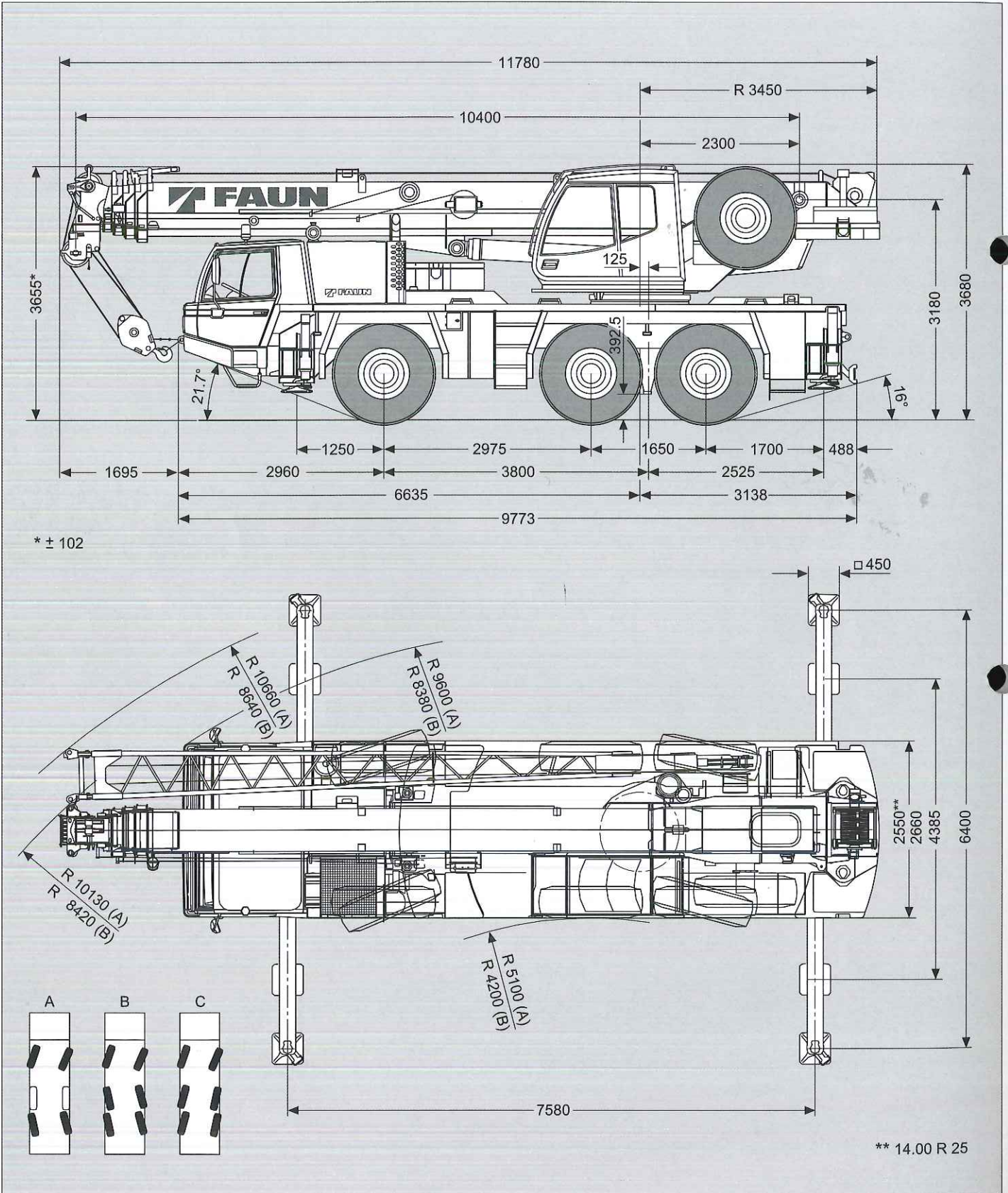
ALL-TERRAIN ATF 60-3

ISO 9001



Maße (mm)
 Dimensions (mm)
 Dimensiones (mm)

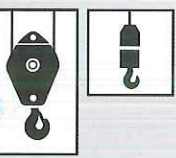
 16.00 R 25






Gewichte / Geschwindigkeiten
Weights / Working speeds
Poids / Vitesses
Pesos / Velocidades de trabajo

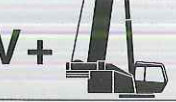
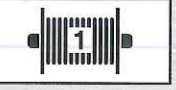
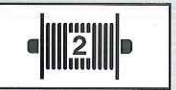

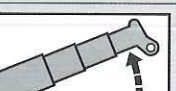
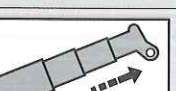
	Achse / Axle Essieu / Eje	1	2	3	Gesamtgewicht / Total weight Poids total / Peso total
	(t)	12	12	12	36*

* Incl. 5,0 t Gegengewicht, Bereifung 16.00 R 25, 9 m / 16 m Gitterspitze, 32 t Hakenflasche, 6 t Hakengeschirr, Antrieb 6 x 6.
* Incl. 5.0 t counterweight, tyres 16.00 R 25, 9 m / 16 m folding swingaway, 32 t hook block, 6 t swivel hook, drive 6 x 6.
* Incl. de 5,0 t contrepoids, pneus 16.00 R 25, 9 m / 16 m extension treillis, 32 t moufle, 6 t elingues, entraînement 6 x 6.
* Incl. contrapeso de 5,0 t, neumáticos 16.00 R 25, 9 m / 16 m plumin articulado, gancho de 32 t, 6 t gancho de bola, tracción 6 x 6.

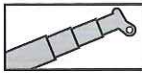
	Traglast / Lifting capacity / Force de levage / Capacidad de elevación	Rollen / Sheaves Pulies / Poleas	Stränge / Parts of line Brins / Ramales de cable	Gewicht / Weight Poid / Peso
	* Doppelhaken	50 t*	5	11
* Rams horn	50 t	5	11	500 kg
* Moufle avec crochet marin	32 t*	3	7	300 kg
* Gancho doble	32 t	3	7	300 kg
	12.5 t	1	3	170 kg
	6 t	-	1	150 kg



		1	2	3	4	5	6	7	8	9	10	11	12	R1	R2		
14.00	km/h	5	7	9	11	14	18	24	31	40	52	66	80	6	7		66%
16.00	km/h	6	7	10	12	16	20	26	34	44	56	71	80	6	8		59%

	Stufenlos Infinitely variable Progressivement variable Infinitamente variable	Seil Rope Câble Cable	Max. Seilzug Max. single line pull Effort maxi au brin simple Trio máximo por ramal
	0 - 130 m/min 4. Lage 4 th layer 4 ^{ème} brin capa 4 für einfachen Strang single line au brin simple ramal simple	16 mm / 170 m	52 kN 1. Lage 1 st layer 1 ^{er} brin capa 1
	0 - 130 m/min 4. Lage 4 th layer 4 ^{ème} brin capa 4 für einfachen Strang single line au brin simple ramal simple	16 mm / 170 m	52 kN 1. Lage 1 st layer 1 ^{er} brin capa 1
	0 - 2 min ⁻¹ / 0 - 1 min ⁻¹		
	-2° - +82°	ca. 33 s approx. 33 s env. 33 s aproximadamente 33 s	
	10.4 m - 40.2 m	ca. 90 s approx. 90 s env. 90 s aproximadamente 90 s	

Tragfähigkeiten
Lifting capacities
Capacités de levage
Capacidades de elevación

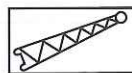


13.2t

DIN / ISO

→ m	10.4 m	14.1 m	17.8 m	21.6 m	25.3 m	29.0 m	32.7 m	36.5 m	40.2 m
2.5	60.0*								
2.5	55.0								
3.0	49.6	30.0							
3.5	45.2	30.0	30.0						
4.0	41.6	30.0	29.0	20.0					
4.5	38.4	30.0	27.6	20.0					
5.0	35.5	30.0	26.2	20.0	17.0				
6.0	30.5	29.2	22.6	18.7	17.0	13.0	13.0		
7.0	26.3	25.5	20.0	17.5	15.8	13.0	13.0		
8.0	17.8	21.0	20.0	16.2	14.5	12.4	13.0	9.0	7.0
9.0		17.1	17.5	14.4	13.3	11.9	12.0	8.8	7.0
10.0		14.3	14.7	12.9	13.0	11.3	11.0	8.5	7.0
11.0		12.1	13.0	11.9	12.6	10.7	10.1	8.3	7.0
12.0			12.0	11.5	11.6	9.7	9.2	8.1	7.0
14.0			9.4	9.5	9.0	8.1	7.8	7.6	6.5
16.0				7.6	7.7	7.0	6.7	6.5	6.1
18.0				6.2	6.4	6.2	5.4	5.8	5.3
20.0					5.4	5.4	4.5	5.0	4.6
22.0					4.5	4.6	4.0	4.1	3.9
24.0						3.9	3.6	3.4	3.2
26.0						3.3	3.2	2.9	2.7
28.0							2.9	2.4	2.2
30.0							2.5	2.0	1.8
32.0								1.6	1.5
34.0								1.3	1.2
36.0									0.9

→ %	I	II	III	IV
0	0	50	50 / 100 / 0	100 / 0
0	0	0	50 / 0 / 33	50 / 50
0	0	0	0 / 0 / 33	0 / 50
0	0	0	0 / 0 / 33	0 / 50



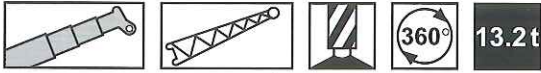
13.2t

DIN / ISO

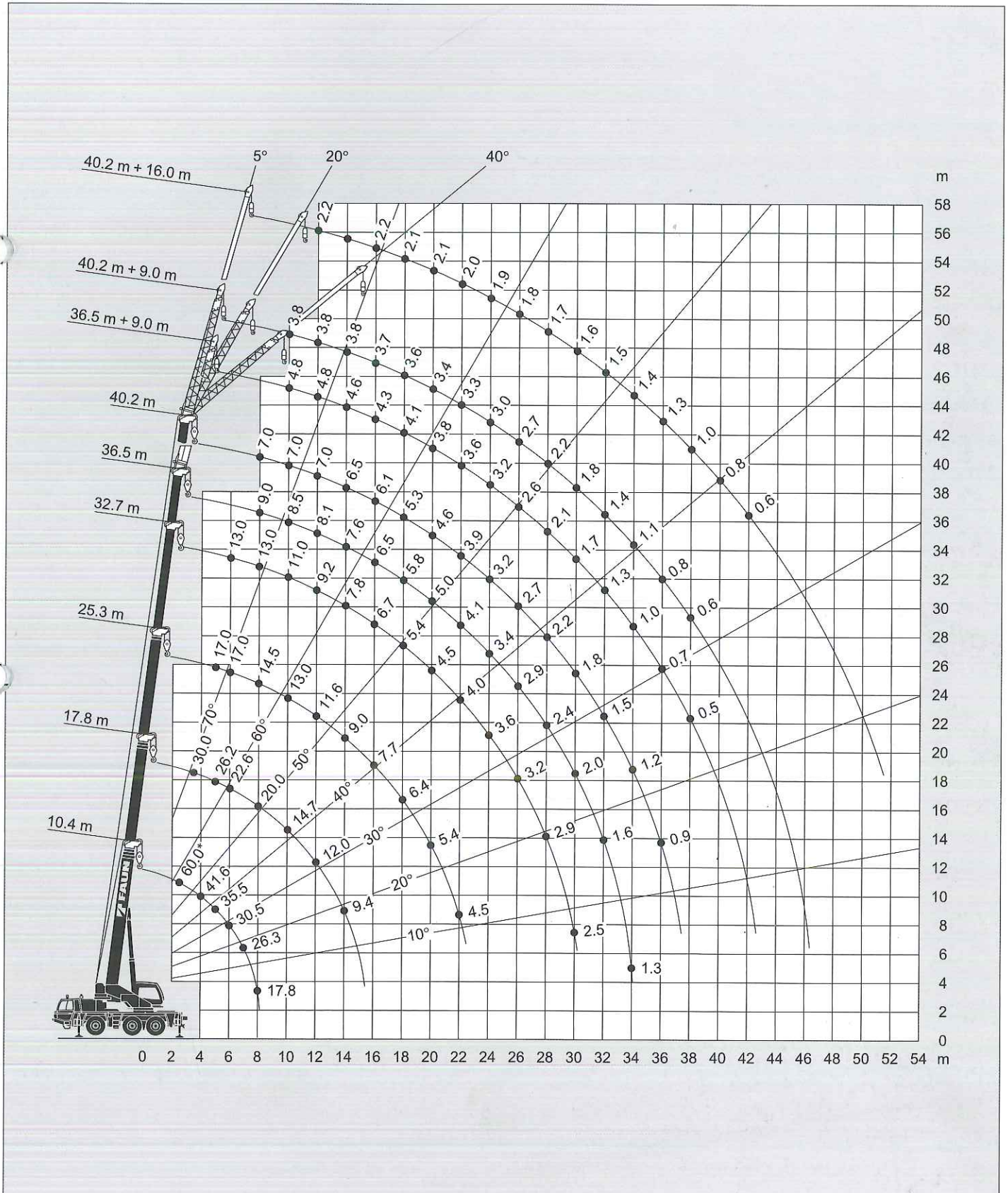
→ m	36.5 m + 9.0 m			40.2 m + 9.0 m			40.2 m + 16.0 m		
	5°	20°	40°	5°	20°	40°	5°	20°	40°
10	4.8			3.8					
11	4.8			3.8					
12	4.8	3.8		3.8	3.4		2.2		
14	4.6	3.6	2.5	3.8	3.4	2.5	2.2		
16	4.3	3.3	2.4	3.7	3.3	2.5	2.2	1.8	
18	4.1	3.1	2.3	3.6	3.1	2.4	2.1	1.7	1.3
20	3.8	2.9	2.2	3.4	3.0	2.3	2.1	1.7	1.3
22	3.6	2.8	2.1	3.3	2.9	2.2	2.0	1.6	1.2
24	3.2	2.6	2.1	3.0	2.7	2.1	1.9	1.5	1.2
26	2.6	2.5	2.0	2.7	2.6	2.1	1.8	1.5	1.2
28	2.1	2.3	2.0	2.2	2.4	2.0	1.7	1.4	1.1
30	1.7	1.8	1.9	1.8	1.9	2.0	1.6	1.3	1.1
32	1.3	1.4	1.5	1.4	1.5	1.6	1.5	1.2	1.1
34	1.0	1.1	1.1	1.1	1.2	1.3	1.4	1.2	1.0
36	0.7	0.8	0.8	0.8	0.9	1.0	1.3	1.1	1.0
38	0.5	0.5	0.5	0.6	0.6	0.7	1.0	1.1	1.0
40							0.8	0.9	0.9
42							0.6	0.7	0.8
44								0.5	0.6

→ %	I	II	III	IV
100	100	100	100	100
75	100	100	100	100
75	100	100	100	100

Hubhöhen
Lifting heights
Hauteurs de levage
Alturas de elevación



DIN / ISO



*Nach hinten, mit Zusatzausrüstung / *Over rear, with additional equipment / *A l'arrière, avec équipement supplémentaire / *Sobre la parte trasera, con equipo adicional